

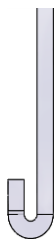
Patient Pump Bridge (See TR 610814/2)

ICU

- Largest in length and tray width – HEAVIER HENCE 2 MAN CARRY RECOMMENDED
- Width adjustable (legs only)
- Designed to take (5 +2) Asena or (4 + 2) Fresenius type pumps.
- Inward facing feet.
- 470-650mm W x 362mm H x 850mm L (note leg length 700mm)

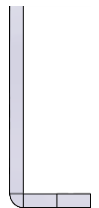
IMAGING

- Shorter in length and lower in height for standard CT scanner aperture (700mm diameter).
- Width is also designed to suit CT scanner couches.
- Fixed width -d utilises bracing bars which are fixed.
- Designed to take (5) Asena or (4) Fresenius type pumps.
- Outward facing feet - can be used with strapping 406mm W x 326mm H x 780mm L



THEATRES

- Approximately the same dimensions as the Imaging variant.
- Width adjustable (legs only)
- Designed to take (5) Asena or (4) Fresenius type pumps.
- Inward facing feet - can also be used with strapping
- 370-520mm W x 332mm H x 780mm L



ED

Same as the theatres model

- Width adjustable (legs only)
- Incorporates cut outs in side lips to accommodate equipment hoses
- Designed to support 1-2 syringe driver pumps + 2 other medical devices (for PHNT (1) off Drager delta monitor + Oxylog 3000T). Limiting factors are:-
 1. maximum load weight
 2. Size/geometry
 3. Visibility/access for/to the care giver.
- Bridge can be used with a Trauma Board (currently supplied by Wolverson X Ray Ltd). This variant incorporates stretch strapping with quick release hooks which attach to cut outs in the side runners of the trauma board; the strapping is anchored onto the side wall of the on a fixing which allows some rotation for alignment.

This variant will need to be tested for road transport and incorporate strapping to secure the medical devices to the bridge if used in an ambulance.



Max load rating

- 24Kg for ICU, 18Kg for Imaging, E.D. and for Theatres model.
- Safety margin of 3 has been applied.
- Bridge material is designed to fold rather than fracture.

Bridge material/fabrication

- PETG material (heat treated to relieve stress prior to fabrication).
- The bridge contains metalwork; aluminium (bracing bars) and stainless steel (fixings).

Bridge weight

- The (CAD) weights of the models and their current version number are shown below, these have all been registered with ACID:
 - Theatres V5: 8.1Kg's
 - ED V1: 8.1Kg's
 - ICU V5: 10.9kgs
 - Imaging V5: 6.8kgs

Artwork

- Bridge is labelled with max load rating label affixed as standard. Other artwork can be printed and affixed to the bridge at the request of the Customer, e.g., PHNT individual departments are assigned unique colour code and bridges are identified to end user.
- Labels are suitable for cleaning solvents/longevity and are affixed along both bridge legs.

CE Marking

- The bridge is not to be CE Marked at this stage as it has been judged to a non-medical (unclassified) device by the MHRA (See MHRA E/2015/1474, dated 15/12/15 – Appendix A TR610814)